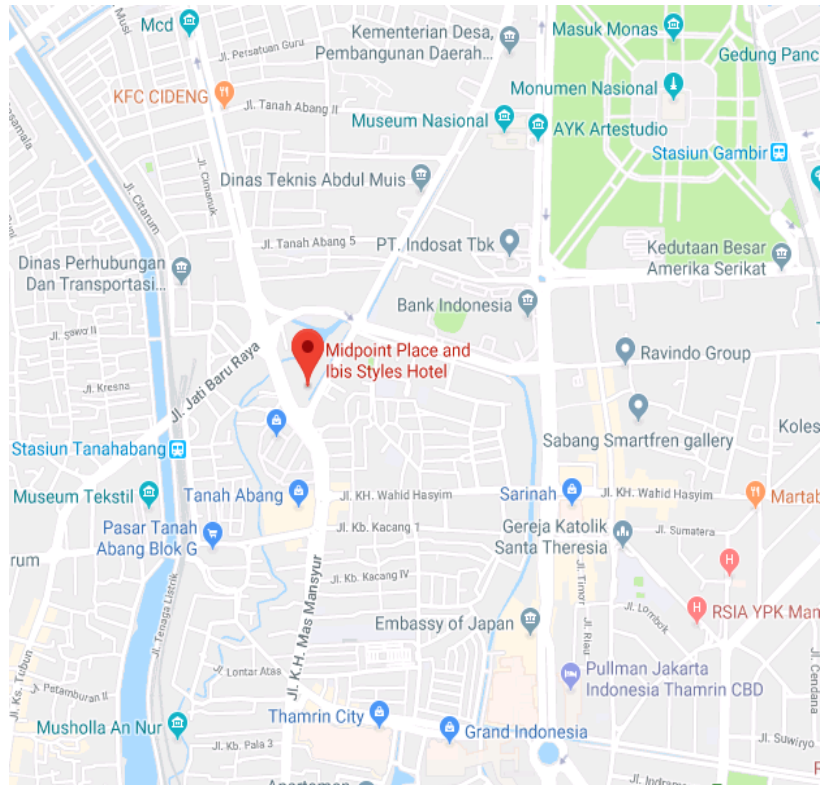


MIDPOINT PLACE

Jl. Fachruddin No. 22, 24 & 26

FOR LEASE

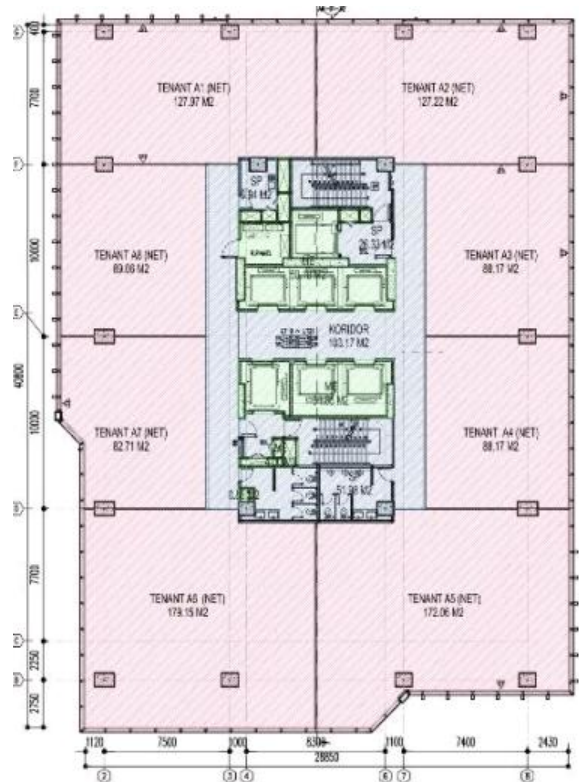
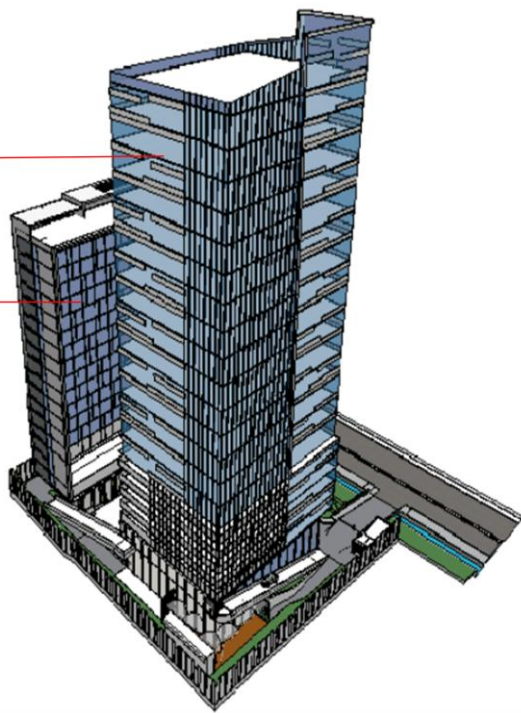


BUILDING INFORMATION

Total Floor	: 22 levels
Office Area	: TBA sqm
Floor Size	: \pm 1,100 sqm (semigross)
Ceiling	: Typical office = 2.7m Ground floor = 4.0 m
Parking Area	: 2 Basement 7 Structures
Lift	: Passenger = 6 units Parking = 2 units Service Lift = 1 unit
AC	: Water Cooling System (Brand: Daikin)
Zoning	: 8 zones per floor

COMMERCIAL TERMS

Base Rental	: IDR 180,000 / sqm
Service Charge	: IDR 90,000 / sqm (Include AC during normal office hours)
Security Deposit	: 3 months Gross Rent
Parking	: <ul style="list-style-type: none">- Reserved = TBA- Unreserved = TBA- Motorcycle = TBA
Overtime	: IDR TBA / Zone / Hour



WHY MIDPOINT PLACE?



Located at Jakarta's central business area



Convenient accessibility to / from any Public Transportation



Owned and Manage by reputable developer



Integrated with well known and modern Ibis Style Hotel



Simple Layout with Flexible size, start from 101sqm up to 1,100sqm

FOR ENQUIRIES

Harvey Krisnadi

Coldwell Banker Commercial

Kawasan Bisnis Granadha, 12th B Floor
Jl. Jend Sdirman kav. 50

www.cbcindonesia.co.id



0878 9763 8383



021 255 39 333 / 388



harveykrisnadi@coldwellbanker.co.id



**COLDWELL
BANKER
COMMERCIAL**

© 2014 Coldwell Banker Indonesia. All Right Reserved.
Coldwell Banker is a registered trademark licensed to Coldwell Banker LCC. An equal opportunity company.
Each Office is Independently Owned and Operated.